



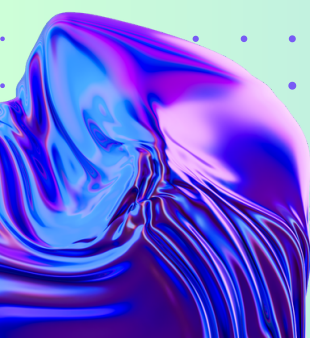
**Asian Exporters' Chamber *Of* Commerce and Industry**  
(Recognised by Ministry of Commerce, Govt. of India)

# AECCI MEMBERSHIP

BECOME A MEMBER



**COME GROW WITH US...!!**



VISIT US:  
**HILTON TOWERS, 604, 6TH FLOOR, PLOT  
NO. 66, SECTOR 11, CBD BELAPUR, NAVI  
MUMBAI, MAHARASHTRA 400614**

WEBSITE:  
**WWW.AECCI.ORG.IN**

CALL US:  
**+91 -8433720996  
+91-22-412 711 45 | 46 | 47**

MAIL US:  
**MEMBERSHIP@AECCI.ORG.IN**

# MISSION AND

## Mission

Our mission is to actively participate in promoting and advancing the interests of the Asian exporters' community. We strive to achieve this by networking with other

members, sharing knowledge and expertise, and collaborating on initiatives that contribute to the growth and success of our respective businesses and the community as a whole.



# - VISION

## Vision

Our vision as a member of AECCI is to be a leading player in the global market, recognized for our high-quality products and services and our commitment to ethical business practices. By working together towards our shared goals and objectives, we aspire to create a more prosperous and sustainable future for the Asian exporters' community.

**COME GROW  
WITH US..!!**



# WHY TO BE MEMBER OF AECCI?

Becoming a member of AECCI offers numerous benefits for businesses and professionals. As a member, you gain access to our extensive network of members and partners, providing ample opportunities for networking, collaboration, and business expansion.

Additionally, you can leverage our resources and services, such as business consulting, market research, and legal advice, to support your business growth and development. Being a member of AECCI also reflects your commitment to business excellence, gender diversity, and social responsibility, which can positively impact your brand image and reputation.

## BECOME A MEMBER



**SMALL BUSINESS  
MEMBERSHIP**



**START UP  
MEMBERSHIP**



**CORPORATE  
MEMBERSHIP**



**CORPORATE+  
MEMBERSHIP**



**OVERSEAS  
MEMBERSHIP**



**NON-PROFIT  
ORGANIZATION  
MEMBERSHIP**

## MEMBERSHIP TYPES

# SMALL BUSINESS MEMBERSHIP

Any individual or organization including proprietorship, partnership, Professional, LLP, LLC, or other SME's engaged in trade, commerce, or economic welfare of the community can be our Small

Business Member. Members receive a wide range of benefits providing every company a platform for networking and brand exposure; with valuable information and insight; to any assistance in matters pertaining to Legal advocacy.

**JOINING FEE - INR 2000**

**ANNUAL FEE - INR 6000**

# START- UP MEMBERSHIP

For start-up companies such as IT sector, real estate sector, Healthcare tech, delivery services, Artificial Intelligence, e-commerce, B2B Software, Supply chain management & logistics etc. which is less than a year old and have no other offices worldwide. A copy of the organization's Certificate of Incorporation must be submitted upon application. For the company's first 2 year's membership they can enjoy Start-up Membership fees wherein Members receive a wide range of benefits providing every company a platform for networking and brand exposure; with valuable information and insight; to any assistance in matters pertaining to Legal advocacy. After the 2 years, Start-up Members must upgrade to Small Business or Corporate Membership to remain a Chamber member.



**JOINING FEE - INR 2000**

**ANNUAL FEE - INR 8000**



## CORPORATE MEMBERSHIP

AECCI creates an environment for the members to build mutually beneficial and lasting business relationships through various events and thus AECCI's Corporate Membership can be acquired by Private Limited Companies. Members receive a wide range of benefits providing every company a platform for networking and brand exposure; with valuable information and insight; to any assistance in matters pertaining to Legal advocacy.

**JOINING FEE - INR 2000**

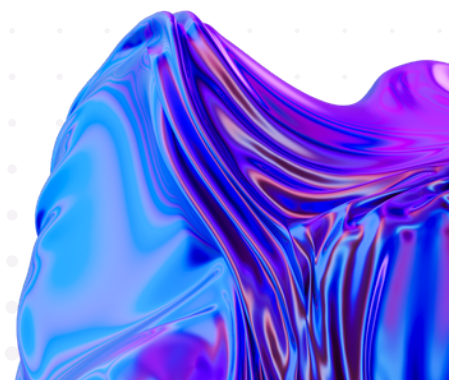
**ANNUAL FEE - INR 10000**

## CORPORATE+ MEMBERSHIP

AECCI provides a diversified environment for the members, which benefits both parties and increases business relationships through various events. Thus, AECCI's Corporate+ Membership can be acquired by Banks or Limited companies or any Public listed Companies. Members receive a wide range of benefits providing every company a platform for networking and brand exposure; with valuable information and insight; to any assistance in matters pertaining to Legal advocacy.

**JOINING FEE - INR 2000**

**ANNUAL FEE - INR 20000**



## OVERSEAS MEMBERSHIP

Companies who are based outside India of corporate and commercial field are eligible for Overseas Membership in AECCI. It provides direct contact with AECCI and its services such as assistance for Commercial Arbitration matters or to establish new venture in India or fulfillment of compliance for every business need. Members receive a wide range of benefits providing every company a platform for networking with valuable information and insight; to any assistance in matters pertaining to Legal advocacy.

**JOINING FEE - \$ 50**

**ANNUAL FEE - \$ 200**

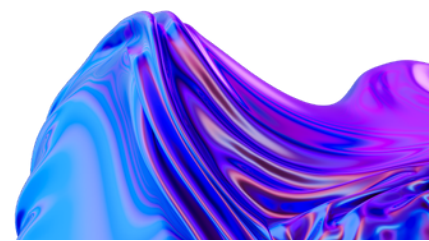


## NON-PROFIT ORGANIZATION MEMBERSHIP

For Non-Profit organizations such as Education, Trust, Institutions, Foundations, centre's etc. can be registered in AECCI as a Non-Profit organization member. Proof of non-profit status is required upon application. Non-Profit Organization Members receive a wide range of benefits providing every company a platform for networking and brand exposure; with valuable information and insight; Of regular Government update.

**JOINING FEE - INR 2000**

**ANNUAL FEE - INR 5500**



## MEMBERSHIP BENEFIT

# MEMBERSHIP BENEFITS

BENEFITS	SMALL BUSINESS	START-UP	CORPERATE	CORPERATE+	OVERSEAS	NON-PROFIT
Certificate of Membership.	✓	✓	✓	✓	✓	✓
Certificate of Origin (Non-Preferential)	✓	✗	✓	✓	✗	✗
Digital Platform access for e-CO service	✓	✗	✓	✓	✗	✗
VISA Recommendation	✓	✓	✓	✓	✗	✗
Company Listing on Chamber's digital Membership Directory	✓	✓	✓	✓	✓	✓
Members' discounted rates for all Chamber events	✗	✓	✓	✓	✓	✓
Regular updates for the important circular/notifications from GOI.	✓	✓	✓	✓	✓	✓
Assistance in Handling International Payment Disputes (Arbitration)	✓	✗	✓	✓	✓	✗
Focus on HR Solutions for members who help them to grow their business and manage Human Resource and labor law needs.	✗	✓	✓	✓	✗	✗
Preferential advertising rates on the website, Daily Viewpoint, Newsletter, Annual Magazines and direct marketing tools	✗	✗	✓	✓	✗	✓
Use of Chamber Logo.	✗	✓	✓	✓	✗	✗
Exposure of Business to Potential Audience – Your Company's hallmark is entitled to the section of our prestigious Member on the AECCI website which attracts a daily visitor base of 500 + per day more than 10000 unique visitors a month.	✗	✗	✗	✓	✓	✗
Volunteer/Sponsorship Opportunities.	✗	✗	✗	✓	✓	✗
Assistance to deal with day to day issues in New/existing business, their expansion and diversification plans	✗	✓	✗	✓	✗	✗
Networking opportunities with other Members that help you to develop the partnership with in business community	✗	✓	✗	✓	✓	✓
Legal assistance in matters pertaining to Legal advocacy.	✗	✓	✓	✓	✗	✗
The Chamber magazine announces all new joining members alongside other joining companies	✗	✗	✗	✓	✗	✗
Complimentary advertisement of joining company – viewpoint – full page; Quaterly Newsletter – Half	✗	✗	✗	✓	✗	✗
Opportunity to submit an article to be published in the Chamber magazine	✗	✗	✗	✓	✗	✗



# CONTACT US

**For Inquiries**



[www.aecci.org.in](http://www.aecci.org.in)



[membership@aecci.org.in](mailto:membership@aecci.org.in)



+91 -8433720996  
+91-22-412 711 45 | 46 | 47



Hilton Towers, 604, 6th  
Floor, Plot No. 66, Sector 11,  
CBD Belapur, Navi Mumbai,  
Maharashtra 400614

